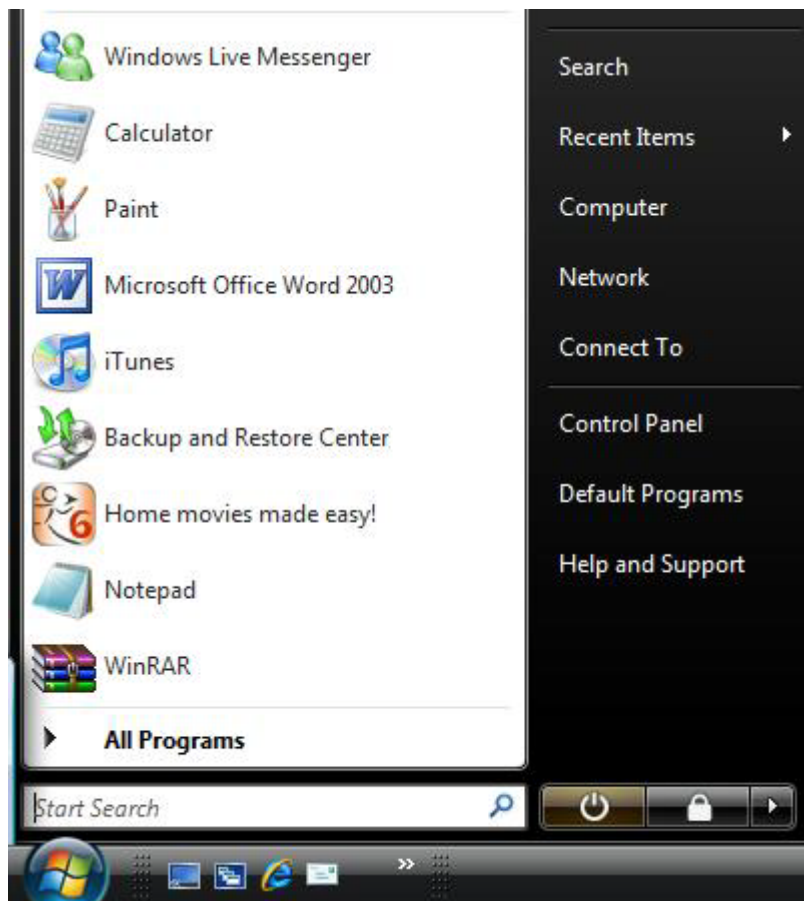
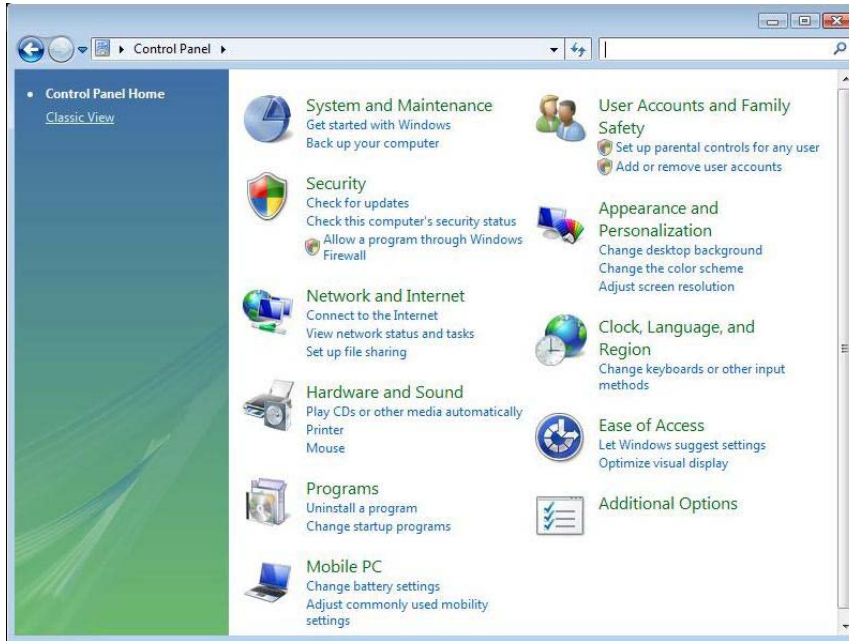


Vista - High Speed Internet Installation Guide

1. Click the **'Windows'** button..



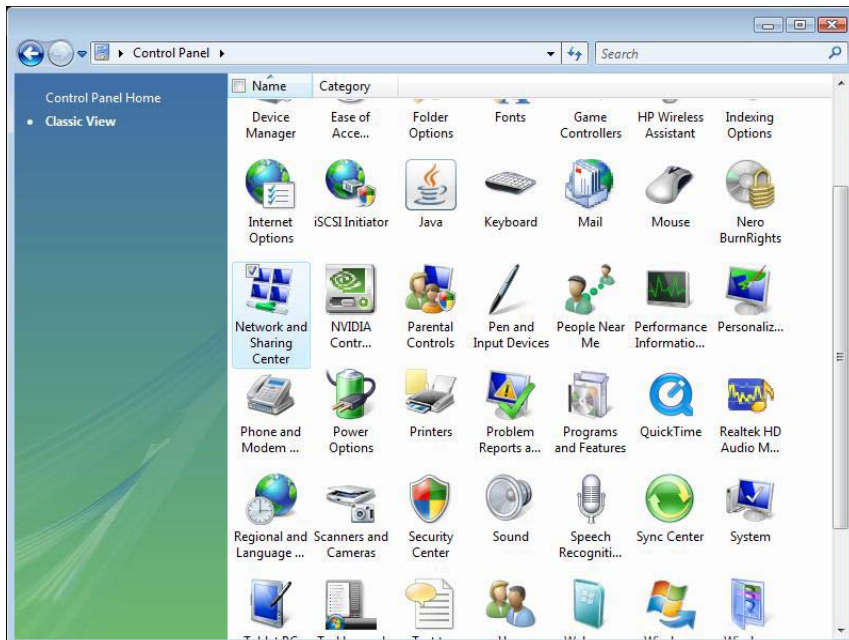
2. Click on 'Control Panel'.



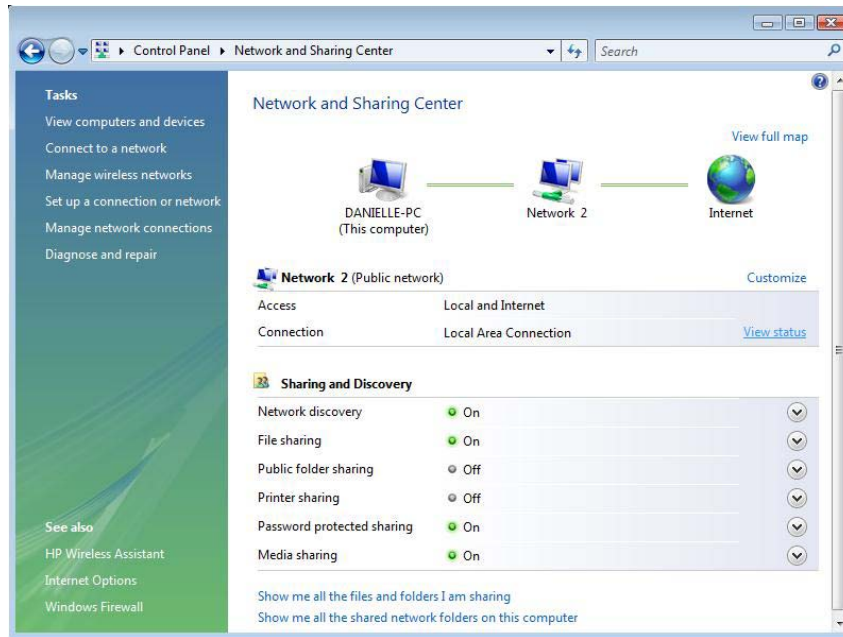
3. Windows Vista has two different views of the Control Panel. 'Classic View' with small icons and 'Category View' with bigger icons.

If you are using the Category View, please change to the Classic View by clicking the link 'Classic View'.

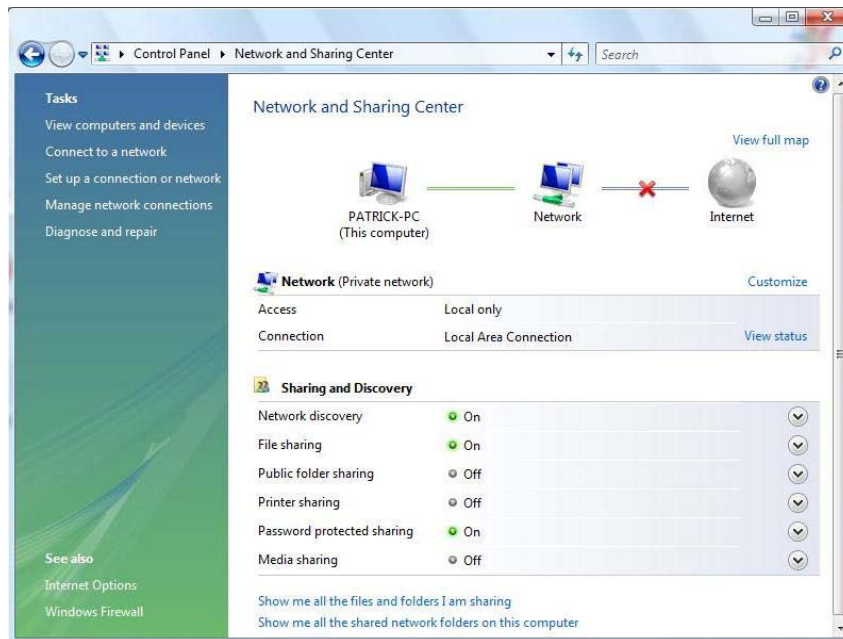
If you are already in the Classic View, please continue straight to **step 4**.



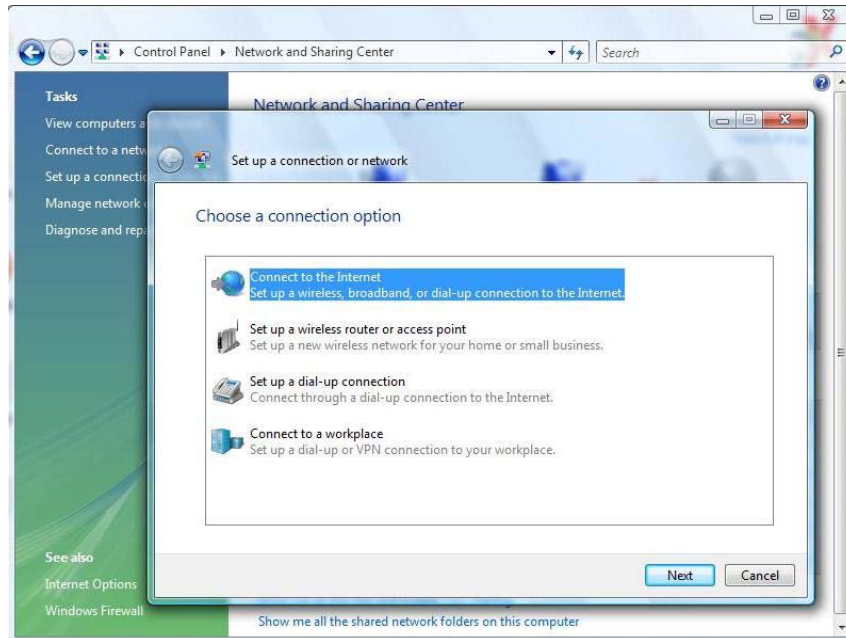
4. Click the [Network and Sharing Center] icon to open.



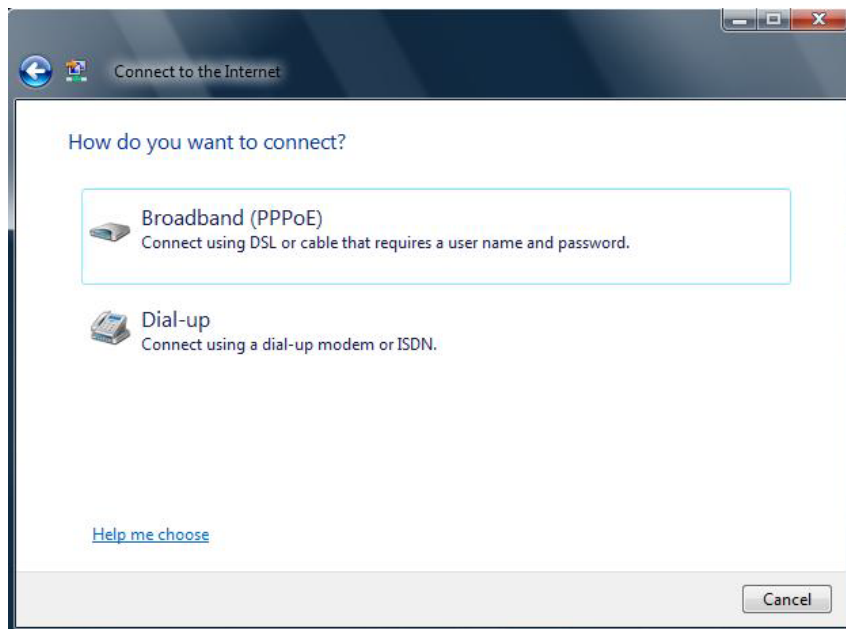
5. Click on 'Set up a connection or network'.



6. Highlight **'Connect to the Internet'**
Click **[Next]** to continue.



7. Click **'Broadband (PPPoE)'**.



8. Enter the **user name** and **password** your service provider has given you.

Check '**Remember this password**'

Type '**Cooptel**' under **Connection name**

Click '**Connect**' to continue and to connect to the internet

Your connection parameters will be saved
for you to connect to the Internet in the future.

