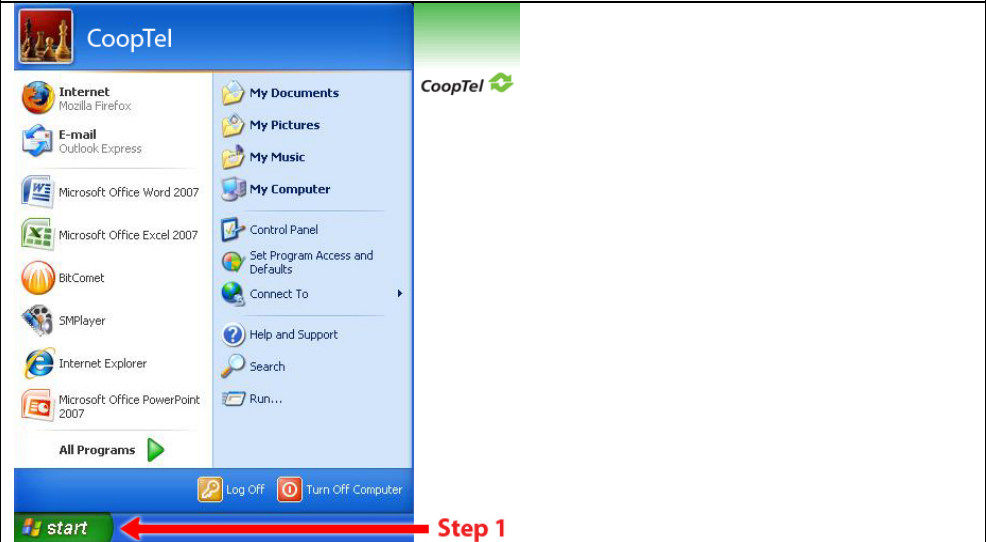
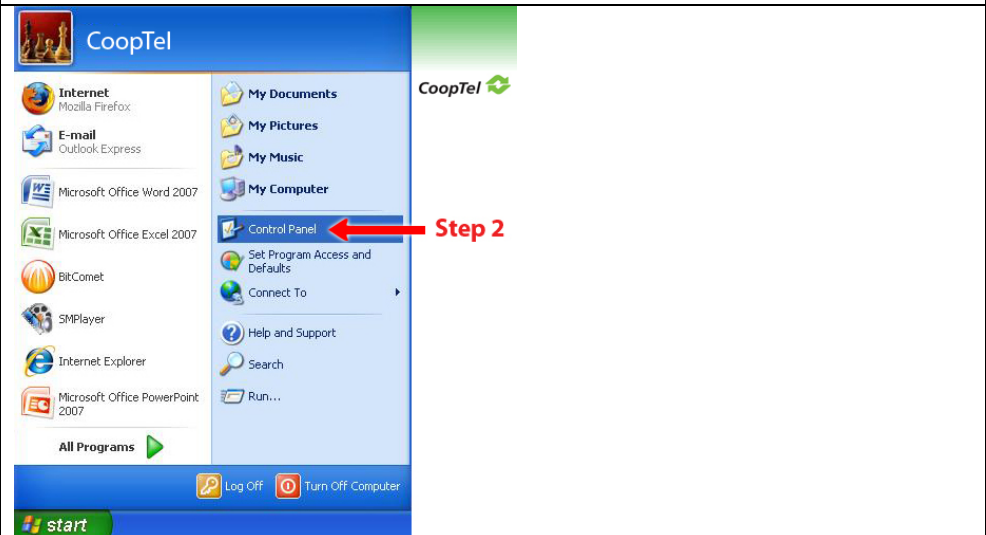


## DHCP Setup Guide for Windows XP Building Your CoopTel High Speed Internet Connection

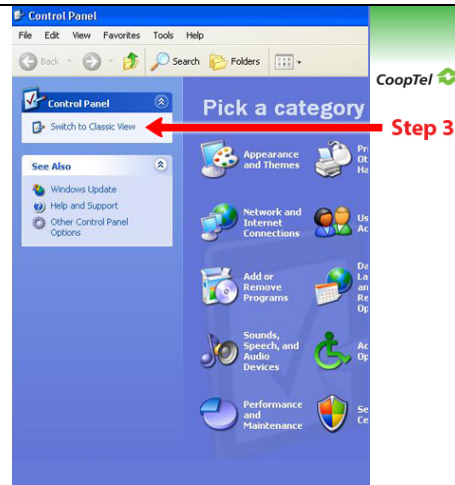
This guide describes how to set your Windows XP computer to accept DHCP or Dynamic Host Configuration Protocol. This dynamic address is issued to your computer by a central DHCP service when it is connected to a network. An available IP address is allocated and then renewed back into an availability pool when it is no longer required. Since each computer requires a unique IP address to be on the same network, DHCP allows automatic network connections without the IP address conflicts that would occur if two computers had the same static or fixed IP addresses.

Step 1	
<ul style="list-style-type: none"><li>Click the 'Start' button</li></ul>	 A screenshot of the Windows XP Start menu. The menu is open, showing various applications and system tools. A red arrow points from the text 'Step 1' to the 'start' button at the bottom left of the Start menu. The 'start' button is highlighted in green. The Start menu items include Internet (Mozilla Firefox), E-mail (Outlook Express), Microsoft Office Word 2007, Microsoft Office Excel 2007, BitComet, SMPlayer, Internet Explorer, Microsoft Office PowerPoint 2007, My Documents, My Pictures, My Music, My Computer, Control Panel, Set Program Access and Defaults, Connect To, Help and Support, Search, and Run... The 'start' button is at the bottom left, and the 'Log Off' and 'Turn Off Computer' buttons are at the bottom right.

Step 2	
<ul style="list-style-type: none"><li>Click on 'Control Panel'</li></ul>	 A screenshot of the Windows XP Start menu, similar to the one in Step 1. A red arrow points from the text 'Step 2' to the 'Control Panel' item in the Start menu. The 'Control Panel' item is highlighted in blue. The Start menu items include Internet (Mozilla Firefox), E-mail (Outlook Express), Microsoft Office Word 2007, Microsoft Office Excel 2007, BitComet, SMPlayer, Internet Explorer, Microsoft Office PowerPoint 2007, My Documents, My Pictures, My Music, My Computer, Control Panel, Set Program Access and Defaults, Connect To, Help and Support, Search, and Run... The 'start' button is at the bottom left, and the 'Log Off' and 'Turn Off Computer' buttons are at the bottom right.

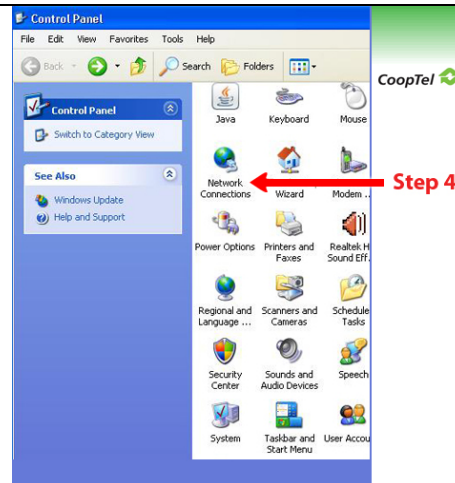
## Step 3

- Windows XP has two different views of the Control Panel. '**Classic View**' has a white background with small icons and '**category View**' has a blue background as pictured above.
- If you are using the Category View, please change to the Classic View by clicking the link '**Switch to Classic View**'.
- If you are already in the Classic View, please continue straight to **step 4**.



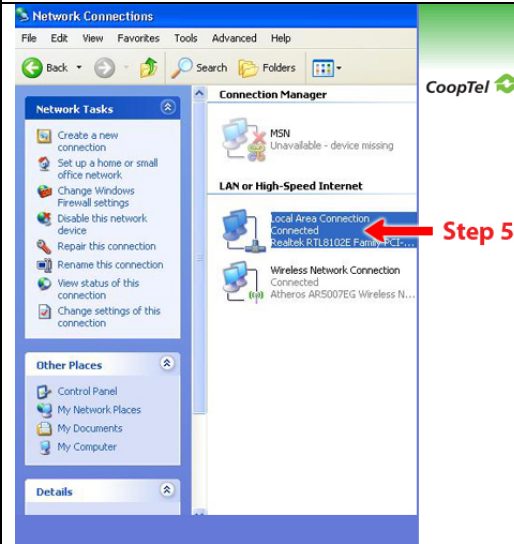
## Step 4

- Click the [Network Connections] icon to open.



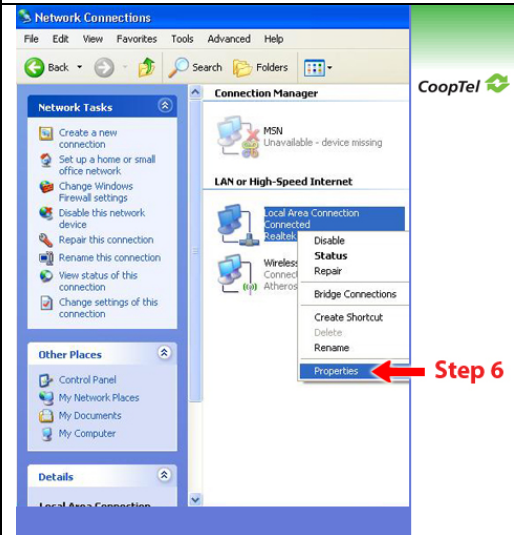
## Step 5

- Right-click on your network card icon; typically it will be called 'Local Area Connection'



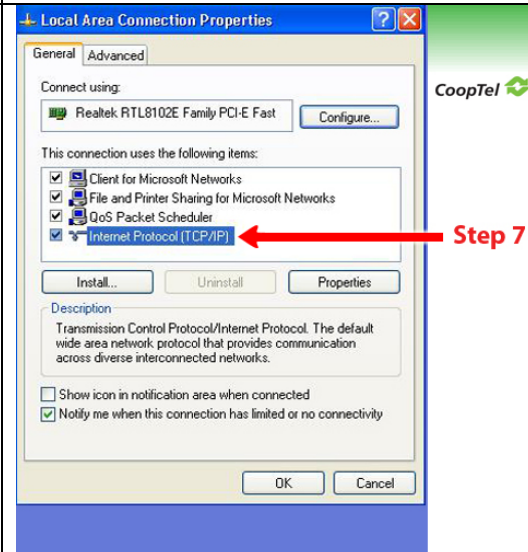
## Step 6

- Select 'Properties' from the selection and left-click to open.



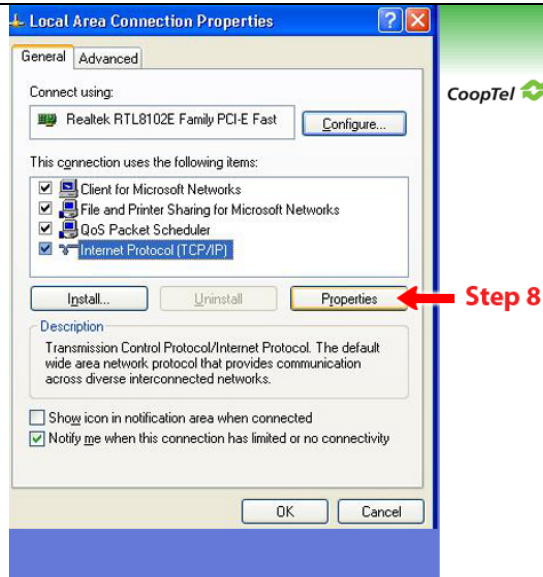
## Step 7

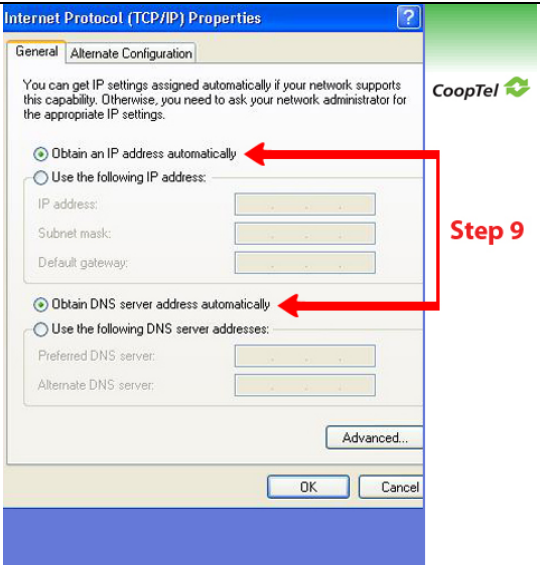
- Highlight 'Internet Protocol (TCP/IP)', but make sure you have NOT un-ticked the box.

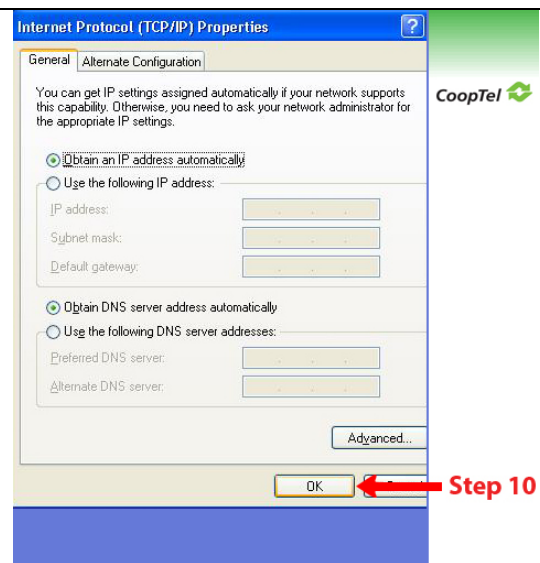


## Step 8

- Press the [Properties] button to continue.

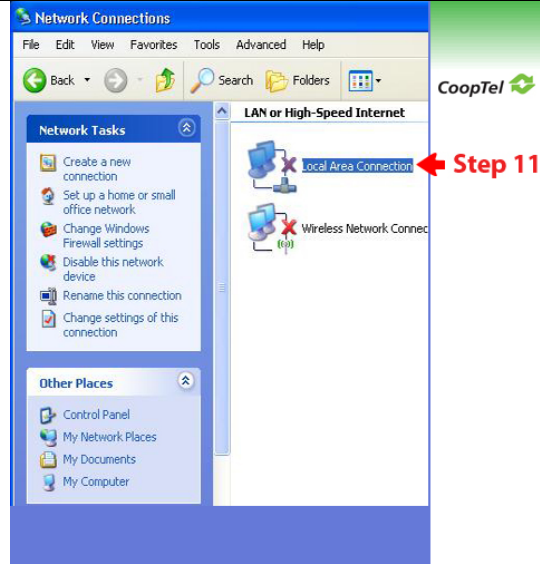


<p><b>Step 9</b></p>	
<ul style="list-style-type: none"> <li>Select '<b>Obtain an IP address automatically</b>' and '<b>Obtain DNS server address automatically</b>'. If you have special circumstances which require a specific IP address for other uses, it can be stored in the '<b>alternate configuration</b>' tab.</li> </ul>	 <p style="text-align: right;"><b>Step 9</b></p>

<p><b>Step 10</b></p>	
<ul style="list-style-type: none"> <li>Click the [OK] button to continue. This will close this window and automatically prompts Windows XP to request a server assigned IP address from a DHCP service. This new IP address can be verified in the next step.</li> </ul>	 <p style="text-align: right;"><b>Step 10</b></p>

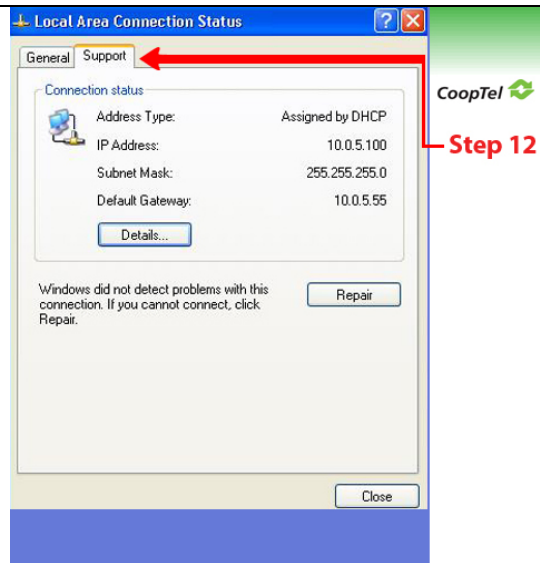
## Step 11

- Double-click the 'Network Connections' icon.



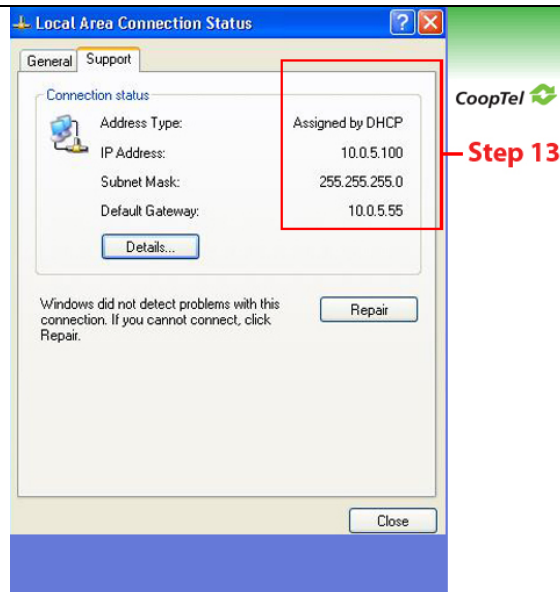
## Step 12

- Select the 'Support' tab.



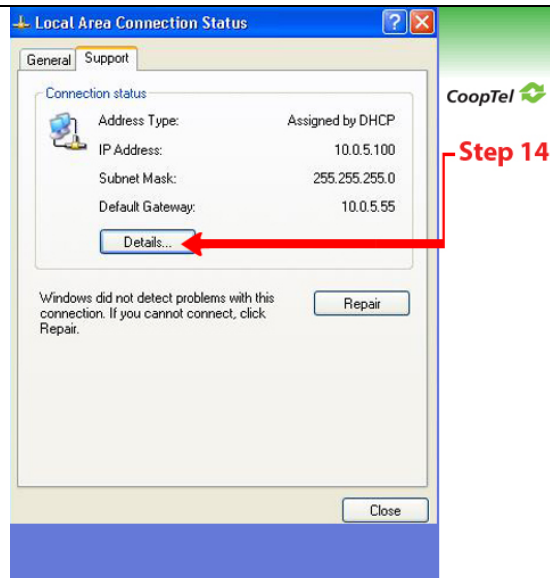
## Step 13

- Confirm that the **Address Type** is 'Assigned by DHCP'. The IP Address, Subnet Mask and Default Gateway will vary from network to network, although the IP and gateway will typically start with 192.168....
- If the IP Address starts with 169... it has not been set by the DHCP server (this happens if Windows XP does not receive a response from the server). If this occurs please check the cable connections are secure and proceed to step 14.
- If a suitable IP address is displayed and your Internet access is working correctly you can skip the next step and proceed straight to 15.



## Step 14

- To force Windows XP to request a new IP address click the **[Repair]** button at the bottom left of the Support tab.



## Step 15

- Click the **[Close]** button.

